



ATTACHMENTS CATALOGUE

Wheel Loader/tractor



Every detail contributes to the integrated solution

Drivex has always been renowned for quality and function down to the last detail – and for supplying effective integrated solutions. The tools in System Drivex provide further confirmation of this. They make your wheel loader or tractor more versatile all year round, whether you're an expert in road maintenance or material handling. You can rely on Drivex to help you do the job better – even in tuffest conditions.



Product overview

04 Job report: Test operation of VB 4000

06 System Drivex

08 Ploughs and grader blades

Folding ploughs	9
Diagonal ploughs, The Sweden plough	10
Ice ripper blade	11
Grader blade	11
Side wing for tractor	12

13 Front sweeper

Front sweeper	13
---------------	----

14 Crane arms and pallet forks

Crane jib for handling hook lift containers	15
Crane arms – Hydr./Mech.	15
Pallet forks – Hydraulic	16
Pallet forks – Mechanical	17

18 Buckets

Snow clearing buckets	19
Sand spreading buckets	20
Back filling buckets	21
Grading buckets	21
Light material buckets	22
Gravel buckets	22

23 Quick hitches

Hydraulic quick hitch	23
-----------------------	----

24 Snow loader – Mählers

Snow loader – Wheel loader	25
----------------------------	----

26 Accessories

27 Specifications

NEW

New, more effective folding and diagonal ploughs

NEW

New forks for better see-through visibility and easier pallet handling

NEW

Grading buckets reinforced with Hardox 450 on the bottom

NEW

Fast, safe, efficient snow loader



WATCH THE VIDEO
engcon.com/international



More comfortable, more efficient

An upgrade of Drivex's popular VB range of folding ploughs has been launched.

The new folding ploughs are even better all-rounders and make snow clearing more comfortable and efficient.

The three heaviest and largest Drivex VB folding ploughs – ranging in width from 3.2 to 4 metres – have been upgraded. They were launched at MaskinExpo in May, and will start being delivered to customers this autumn.

The main improvements include:

- + Conical instead of straight wings. Their rounded shape lifts and moves the snow more effectively.
- + More flexible wings that can be adjusted +/- 35 degrees.
- + The wear soles can be supplemented with optional 8-inch wheels.
- + New float position offers improved manoeuvrability.
- + Reinforced cutter holders with new wedge bolt design.

In addition, the new folding ploughs are ready-prepared for a snow stop and a snow mist guard, which are available as accessories.

Satisfied test drivers

Satisfied test drivers include haulier Janne Ottosson at Ottossons Åkeri in Strömsund and Björn Olsson, a partner in the construction firm Edsbyns Entreprenad. Both of them tested the new plough – a VB 4000 – last winter.

"It's excellent. The best thing of all is the new wings. If you're ploughing a road with 70-80 centimetres of snow along the sides, it's difficult to move the snow off the road. The wings on the VB4000 lift the snow up higher and throw it over the snow ridge along the side of the road," says Olsson.

He also approves of the new float position, which keeps the plough better aligned with the ground and allows wheels to be used instead of wear soles.

"One situation where this is very useful is after the first snowfall, when a lot of gravel is mixed with the snow on the road. Using wheels prevents unnecessary wear."

System Drivex makes your machine an all-rounder

Equipment for wheel loader and tractor

System Drivex is a complete range of buckets, ploughs and tools for material handling that opens up new business opportunities for your wheel loader or backhoe loader all year round. Do you want to simplify your work and switch to a different task in a matter of seconds? Then you should choose our new hydraulic implement hitch, which was released in 2010. Our new pick-up front sweeper, the T 250, is another good example. With a large volume and simple emptying system, it will raise your capacity and profitability for season after season, along with the other tools in System Drivex.

The picture of the implement hitch in the middle shows you some excellent examples of products from the Drivex range: a light material bucket, gravel bucket, grading bucket, snow clearing bucket, mechanical and hydraulic pallet forks and crane arms, a front sweeper, diagonal plough, folding plough, sand spreading bucket and refilling bucket.





New ploughs are better at clearing and throwing snow

The right equipment for road maintenance and snow clearance

A new improved version of Drivex's popular VB folding ploughs was launched in spring 2011. The three largest Drivex VB folding ploughs – ranging in width from 3.2 to 4 metres – have been upgraded. New features include conical wings that lift and throw the snow more effectively, 8-inch wheels to supplement the wear sole and a new, more manoeuvrable float position. The wings have also been made more flexible.

The new line of diagonal ploughs has also been upgraded for maximum ploughing results. New features include a new rounded plough box that rolls and lifts the snow more effectively.



WATCH THE VIDEO
engcon.com/international

Folding ploughs

NEW

The new Drivex VB 3200 – VB 4000 folding ploughs have been further upgraded for simple, efficient snow clearance. The folding plough is a highly flexible attachment for clearing a diverse range of surfaces such as roads, streets, car parks and open spaces. The wings can easily be hydraulically adjusted to plough the snow to the right or to the left, to both sides or in a Y position that gathers the snow together.

New Drivex folding ploughs

- New conical, rounded wings that roll and lift the snow better.
- Wings are adjustable +/-35 degrees (previous version adjustable +/-33 degrees).
- Upgraded cutter holders with a cylinder that keeps the wedge bolt/screw in place, facilitating cutter replacement.
- Stronger cutter holders and float position.
- The plough can be equipped with either 8-inch wheels or wear soles, according to the customer's preference. Wear soles are standard.
- Snow mist guard available as accessory.
- Two new hydraulically controlled snow stops available as accessories. Not available for VB 3200 due to insufficient space.

Extra accessories: Combination valve – Electrically controlled valve allows operation of the left, right or both wings with double-acting hydraulic function.



VB 3200 – VB 4000



Diagonal ploughs

DB 3200 | DB 3700 | DB 4000

Drivex's strong, intelligent diagonal ploughs have been further upgraded for optimal ploughing results.

NEW

- The the shape of the plough has a new rounded design that rolls and lifts the snow more efficiently.
- Upgraded cutter holders with a cylinder that keeps the wedge bolt/screw in place, facilitating cutter replacement.
- The plough can be equipped with either 8-inch wheels or wear soles, according to the customer's preference. Wear soles are standard.
- Stronger cutter holders and float position.
- Snow mist guard available as accessory.
- Hydraulically adjustable snow stop available as accessory.



Technical specification, refer to pages 28-29

The Sweden plough

Sweden plough 320 | 400

Our heavy diagonal plough, The Sweden plough, is available as two models with four or five individually-sprung steel cutters respectively. The plough's positive 45° cutter angle allows good clearance even on very hard-packed road surfaces. During ploughing, the plough glides on rotating, height-adjustable wear soles. The plough's heavy duty design makes it suitable for use on larger wheel loaders.



Brackets:

- Large L120 with horizontal oscillation
- Hydraulic coupling 3/4" female (TEMA 7511)

Accessories:

- Bracket for extra plough cutters

Technical specification, refer to page 29

Ice ripper blade

Ice ripper blade 300 | 330 | 360

The ice ripper blade from Drivex is available as three models with working widths of 3,000 to 3,600 mm. The ice ripper has a positive cutter angle of 50°. This allows very good ice ripping even on hard-packed roads surfaces. The ice ripper swing is $\pm 8^\circ$. The ice ripper's heavy duty design makes it suitable for use on larger wheel loaders. Bracket with horizontal oscillation.



Equipment, Ice ripper blade:

- Ice ripper steel/screwed
- Choc valve, 160 BAR, hydraulic coupling 3/4" female. (TEMA 7511)

Accessories:

- Tilt function incl. hose and coupling 54-TILT
- Snow stop 62-10004

Technical specification, refer to page 29

Grader blade

MS-T5

The Drivex MS-T5 Grader blade can be swivelled, which increases the efficiency of the vehicle. MS-T5 is equally suitable for winter or summer.



Winter:

- Grading winter roads
- Snow ploughing
- Ice ripping

Summer:

- Grading gravel roads and surfaces
- For repair of surface-damage to oil-gravel, gravel and other road materials

The ability to loosen material can be optimised by adjusting the cutter angle, blade angle and pressure against the surface as well as the choice of cutter. This allows a choice of properties based upon the result one wishes to achieve. The grader blade is controlled via an electro-hydraulic NG-6 valve unit. An overflow valve protects the blade during any collisions or overloads. The blade is automatically lifted from the road surface when reverse gear is engaged. The control box is a Canbus-type with a multi-function joystick and a wheel for variable adjustment of the contact pressure against the road surface. MS-T5 is designed for specific models and is available for e.g. Valtra T-Series, Case CVX, etc. For other models, please contact us. When combining a grader blade with a 3-point side plough, an extension is required on the grader blade.

Tractor requirements:

- To be mounted on the tractor's attachment/bracket for front loader (not included)
- LS hydraulics
- Min rec. power 150 hp

Standard:

- Valve unit NG-6, 6 block
- Plain, screwed cutters
- Automated reverse lift
- Control box in cab (Canbus)

Accessories:

- Blade extension 1-foot 135-6050

Technical specification, refer to page 29

Side wing for tractor

The Drivex tractor side wing increases working area and efficiency. The 3-point bracket permits rapid mounting and dismounting of the wing.

A tractor with a front plough and side wing is an unbeatable combination for snow clearance. A tractor with a hydraulic side wing is particularly flexible and efficient in built-up areas.

- Snow ploughing
- Ploughing and grading with under-bite can be performed simultaneously

Parked cars and other obstacles are no great problem, since the plough can be raised, lowered and swung in/out quickly and easily.

Standard equipment

- Safety valve for possible collisions
- 3-point bracket category 2 and 3
- Side lights
- Wear soles

Accessories

- Hydraulic pushrod

Requirements

- Double-action hydraulic connector.
+ free return
- Tractor width approx: 2,300–2,650 mm
- Tractor/rec. min. power: 150 hp



Side wing for tractor



Clean and efficient sweeping

Fast, simple handling

With the new Drivex T250 sweeper roller, the operator can easily adapt the pressure for optimal cleaning and pick-up results. High speed, a large dirt container and an automatic emptying system save valuable time.



Front sweeper

The Drivex T-250 Front Sweeper is a pick-up sweeper-roller for front loaders or tractors, specially developed for professional users. The large dirt volume increases capacity due to fewer emptying stops. The front sweeper is driven by the base machine's third function. In its basic version, it is equipped with a watering system and a right edge brush. Note that the base machine must have capacity for lifting 3.5 tonnes 1.2 metres in front of the implement hitch. Free return to the tank may be necessary, depending on the machine type.

Main benefits:

- Easy to use. Thanks to three pivot wheels and the float position in the loader connection, there is no need for the driver to adjust the load arms
- Low height ensures optimal visibility during transport – particularly important in dense urban areas
- Watering system effectively reduces dust accumulation
- Rubber sleeving around the roller minimises dust accumulation
- When hydraulic flow is switched off, the roller stops and automatically folds up into the container, making it easier to empty swept up debris

T-250



- Roller maintains the same ground pressure regardless of how worn the brush is
- Easy to replace brush combs
- Stepless speed control of edge brush

Accessories:

Flow divider, for machines with flows over 160 l/min.
Left edge brush, individually controllable.

An extended arm with sensitive touch

Choose mechanical or hydraulic operation

Drivex mechanical and hydraulic crane arms work like an extended arm for the machine, allowing you to perform most material handling jobs with high precision. We use high-tensile steel with specially designed profiles to build booms with optimal safety, reliability and load capacity. The pallet forks are available in many variants, and you can order couplings that suit your machine.



NEW

Crane jib for handling hook lift containers

The crane jib is made for dragging and pulling container and roller platforms.

Please note that crane jib is not for lifting containers, merely dragging or shifting.

Crane jib for handling hook lift containers RA 1000



Technical specification, refer to page 30

Crane arms

Drivex crane arms are made from high strength steel with special profiles. The crane arms are manufactured with mechanical or alternatively hydraulic extending sections.



Mechanical KR 350 | KR 500

Hydraulic KRH 350



Hydraulic/mechanical KRH 500 | KRH 700

Hydraulic/hydraulic KRHH 500



Technical specification, refer to page 30

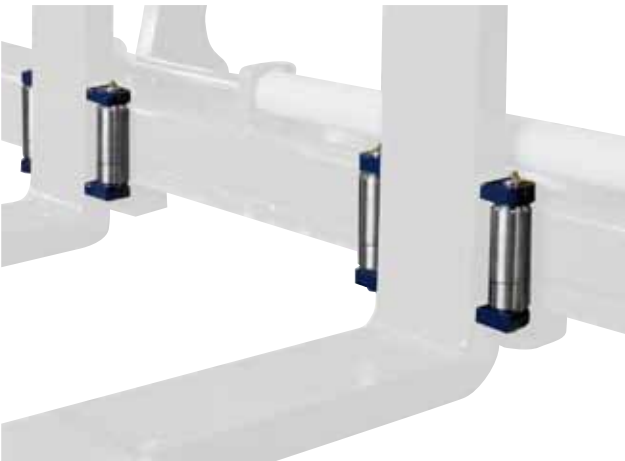
Pallet forks – Hydraulic

Drivex hydraulic pallet forks make it easy to adjust the positions of the forks for any lifting requirements from inside the cab. The pallet forks are available in a large number of varieties, to suit most types of machines. Drivex hydraulic pallet forks with built in cylinders provide excellent visibility at the same time as they keep the cylinders well protected. The Drivex hydraulic pallet forks can be controlled hydraulically to switch between side-shift to spreading with a change over valve. Also available with rollers for easy shifting of heavy loads.

NEW

Accessory: Forks for better visibility

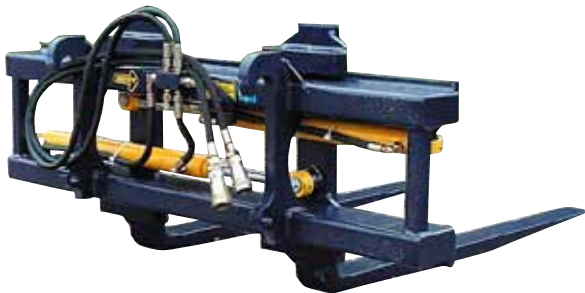
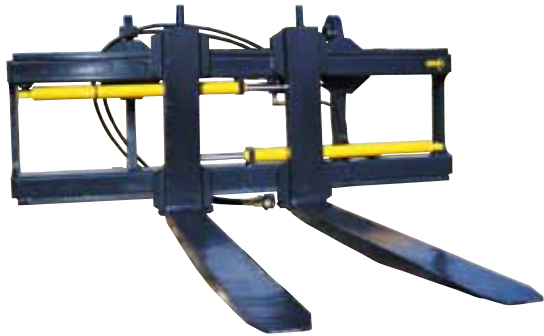
Accessory: Set of rollers



Accessory: Extension forks



GHH 1200 | GHH 1500



GHH 1200 | GHH 2200 | GHH 2500
GHH 1500 | GHH 2000 with built-in cylinders



Pallet forks

– Mechanical

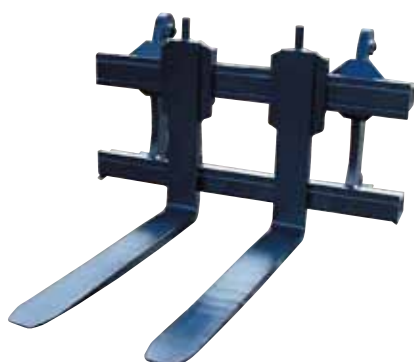
Drivex mechanical pallet forks have a robust and well designed structure for best visibility. The mechanical pallet forks are available in a wide number of varieties to suit most type of machines.

NEW

Accessory: Forks for better visibility

GH 1200 | GH 1500 | GH 2000 | GH 2200 | GH 2500

GH 1300 incl. 2 fork arms





Buckets that stand up to tough treatment

Grading buckets with HARDOX friction plates

Whether you're looking for an advanced hydraulic bucket for snow clearing or sand spreading, an easy-to-fill light material bucket or a hardwearing gravel or grading bucket, Drivex has a solution for you.

Snow clearing buckets

KS 2000 | KS 2600 | KS 2750 | KS 3000 | KS 3500

The Drivex snow clearing bucket is for both large areas and narrow spaces. The flaps have adjustable damping valves. Accumulator tanks, one for each cylinder, are triggered if there are collisions with manholes, kerbs, etc. The flaps are spring-loaded vertically for optimum flexibility. Rubber stops for silent flap closure. The bucket is made from high-tensile steel to ensure a long lifespan. Extra sighting notches on the bucket for maximum view of the cutting edge. Hydraulic coupling 3/4" female (TEMA 7511).

Accessories

- 1,200 mm flaps



WATCH THE VIDEO
engcon.com/international

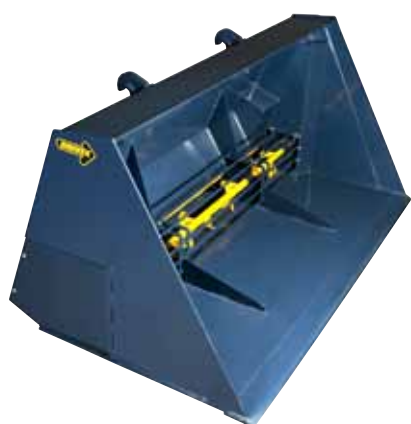
Sand spreading buckets

SS 400 | SS 550 | SS 1000 | SS 1200

Drivex sand spreader buckets are hydraulically driven and equipped with hydraulic valves to control the amount spread. The sand spreader is equipped with a stirring roller, hoses and unions as standard. Can be fitted with most types of loader connection. Designed to spread sand, wood chips, salt, etc.



SS 1800 | SS 2400 | SS 3000



Backfilling buckets

Drivex backfilling buckets for backfilling jobs. Available with different tapers and also completely straight.

ÅF 600 Tapered | ÅF 800 Tapered | ÅF 1200 Tapered



ÅF 1400 Straight



Technical specification, refer to page 33

Grading buckets

Drivex grading buckets have a long bottom so that the driver can see the cutting steel during grading and fine adjustments. The buckets have a sharp edged rear for best grading results. Can be equipped with a raised section of extra large volume when loading with such materials as snow, woodchips, rubbish, etc. Our models have been further reinforced with Hardox 450 in the bottom plate for a longer lifespan.

Models PS 250 – PS 290 have been further upgraded with:

- More rigid design
- 100 mm greater depth
- Fully reinforced panel along whole length of side
- Stronger cutting tool



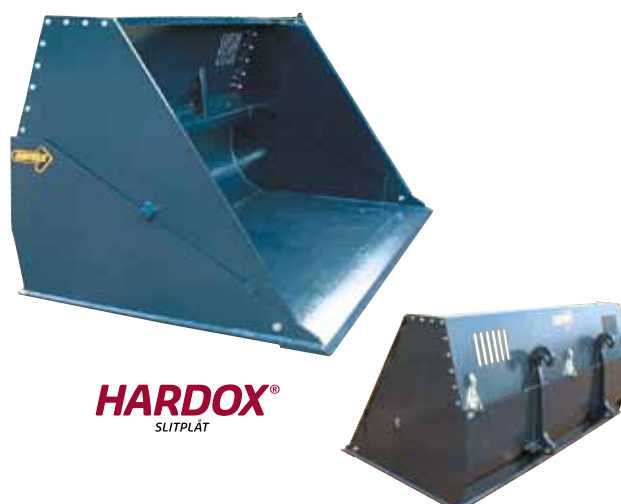
The grading bucket has a long bottom, giving the driver a good view and complete control of the work.

PS 150 HD – PS 290 HD



HARDOX®
SLITPLÅT

PS 150 HD – PS 290 HD with higher section



HARDOX®
SLITPLÅT

Technical specification, refer to page 34

Light material buckets

Drivex light material buckets have a well thought out design to obtain as good carrying and emptying angles as possible. The buckets are equipped with 500 Brinell cutting steels, robustly ribbed sighting grids and longitudinal wear steels to reinforce the bottom. Extra depth for easy entry into the material.

- Other brackets quoted for on request.
- Special buckets manufactured to customer specifications – quotations on request.
- The LM 2000 L–5000 L are prepared for cutting bars.



LM 1800 L – LM 5000 L



Gravel buckets

Drivex gravel buckets are robustly made to transport gravel, topsoil and stone material. The buckets are designed to provide the best possible carrying and tipping angles, and are equipped with 500 Brinell cutting steels. The bucket bottoms are reinforced by longitudinal wear steels. The gravel buckets are prepared for cutting bars.

GS 1500 L | GS 2000 L | GS 2800 L



Switch between jobs in a matter of seconds

New hydraulic implement hitch

How much easier and more profitable it would be if you could switch between tools and jobs in a matter of seconds. Now you can! Our in-house developed hydraulic quick hitch for System Drivex was launched in 2010 after tough and thorough testing.

Quick hitch – Hydraulic

The Drivex hydraulic quick hitch for wheel loaders is designed for optimum visibility and to simplify coupling of tools and quick hitch.

Hydraulic quick hitch





WATCH THE VIDEO
engcon.com/international

Mählers snow loader

When you need to clear large amounts of snow fast,

a Mählers snow loader is an unbeatable attachment for your wheel loader. It fills a truck platform of 25 cubic metres in less than a minute. With 25 loads a day, a single truck can remove more than 600 cubic metres of snow from roads and squares.

Snow loader – Wheel loader

LSV 275 has a rugged design based on the popular, reliable Arbrå/Mählers snowblower. It has a built-in drive motor and transmission with a centrifugal clutch. Individual shear bolts on the angled wings ensure high safety. The load arm is hydraulically foldable to make driving between locations easy, and is equipped with floodlights. The engine meets the latest environmental requirements in EU Stage 3B and is approved for use after 2012.

Coupling:

- New type of coupling from Transfluid
- Hydraulically controlled
- Full power at low engine speed
- Offers higher safety during engine maintenance

Benefits, snow loader:

- **Safety:** The driver can direct all his/her attention ahead. There's no need to reverse, a manoeuvre that can be dangerous, particularly in urban areas.
- **Capacity:** Fills a truck platform measuring 25 m³ in less than a minute.
- **Efficiency:** In addition to its efficiency rating, another benefit of the snow loader is that it breaks up the snow and packs it in a completely different way to an ordinary bucket loader, resulting in higher compaction and fewer loads.
- **Power:** Handles hard-packed snow and ice without problems.
- **Design:** Based on the rugged design of the famous Arbrå/Mählers snowblower.

Snow loader



Accessories

Attachment hooks

Type	Bracket	Dimension
		mm
Attachment hook	L 150-180	40
	Large L120	40
	Small L120	40
	Trima	30
	ZL c/c 310, L30, Atlas 65	30
	ZL c/c 435	30
	ZL c/c 465 L20	30
	Ahlman 85-100	30
	Kramer 380-580	30



Adapters with lever lock

Type	Machine	Equipment	Lock
Adapter	Small L120	Large L120	Lever lock
	Large L120	Small L120	Lever lock
	L150	Large L120	Lever lock
	B-20	Large L120	Lever lock
	Three-point	Trima	Lever lock
	S-60	Large L120	Lever lock
	ZL-L30	Trima	Lever lock
	S-45	Trima	Lever lock
	S-50	Trima	Lever lock
	Trima	Large L120	Lever lock
	ZL-L30	Large L120	Lever lock
	Euro	Trima	Lever lock

Bucket steel

Type	Dimension
	B x H x D mm
Bucket steel	2,600 x 20 x 150
	3,000 x 25 x 200
	3,000 x 30 x 200
	3,600 x 35 x 270

Specifications

Folding ploughs

Type	Bracket	With max	With min	Heigh	Swivelling	Bottom plates	Float position	Weight
		mm	mm	mm				kg
VB 200	Trima	2,000	1,740	800	Hydraulic	2 wear soles	•	400
	L20-L25	2,000	1,740	800	Hydraulic	2 wear soles	•	400

Type	Bracket	With max	With min	Heigh	Swivelling	Bottom plates	Float position	Weight
		mm	mm	mm				kg
VB 240	Trima	2,400	2,150	870	Hydraulic	2 wear soles	•	440
	L30	2,400	2,150	870	Hydraulic	2 wear soles	•	440
	Ahlman 85-100	2,400	2,150	870	Hydraulic	2 wear soles	•	440
	L120	2,400	2,150	870	Hydraulic	2 wear soles	•	440
	3P	2,400	2,150	870	Hydraulic	2 wear soles	•	440
	L120 3P	2,400	2,150	870	Hydraulic	2 wear soles	•	440
	Atlas 65	2,400	2,150	870	Hydraulic	2 wear soles	•	440
	JCB 2CX	2,400	2,150	870	Hydraulic	2 wear soles	•	440
	L20-25	2,400	2,150	870	Hydraulic	2 wear soles	•	440
	L35-45 TPZ	2,400	2,150	870	Hydraulic	2 wear soles	•	440
	Atlas AR50	2,400	2,150	870	Hydraulic	2 wear soles	•	440
	Euro	2,400	2,150	870	Hydraulic	2 wear soles	•	440

Type	Bracket	With max	With min	Heigh	Swivelling	Bottom plates	Float position	Weight
		mm	mm	mm				kg
VB 280	Trima	2,800	2,400	870	Hydraulic	2 wear soles	•	470
	L30	2,800	2,400	870	Hydraulic	2 wear soles	•	470
	Ahlman 85-100	2,800	2,400	870	Hydraulic	2 wear soles	•	470
	L120	2,800	2,400	870	Hydraulic	2 wear soles	•	470
	3P	2,800	2,400	870	Hydraulic	2 wear soles	•	470
	L120 3P	2,800	2,400	870	Hydraulic	2 wear soles	•	470
	Atlas 65	2,800	2,400	870	Hydraulic	2 wear soles	•	470
	JCB 2CX	2,800	2,400	870	Hydraulic	2 wear soles	•	470
	L20-25	2,800	2,400	870	Hydraulic	2 wear soles	•	470
	L35-45 TPZ	2,800	2,400	870	Hydraulic	2 wear soles	•	470
	Atlas AR50	2,800	2,400	870	Hydraulic	2 wear soles	•	470
	Euro	2,800	2,400	870	Hydraulic	2 wear soles	•	470

Type	Bracket	With max	With min	Heigh	Swivelling	Bottom plates	Float position	Weight
		mm	mm	mm				kg
VB 3200	L120	3,200	2,650	1,200	Hydraulic	2 wear soles/wheels	•	1,100
	3P L120 Kombi	3,200	2,650	1,200	Hydraulic	2 wear soles/wheels	•	1,100
	L150-	3,200	2,650	1,200	Hydraulic	2 wear soles/wheels	•	1,100
	3P	3,200	2,650	1,200	Hydraulic	2 wear soles/wheels	•	1,100

Type	Bracket	With max	With min	Heigh	Swivelling	Bottom plates	Float position	Weight
		mm	mm	mm				kg
VB 3700	L120	3,700	3,030	1,270	Hydraulic	2 wear soles	•	1,150
	3P L120 Kombi	3,700	3,030	1,270	Hydraulic	2 wear soles	•	1,150
	L150-	3,700	3,030	1,270	Hydraulic	2 wear soles	•	1,150
	3P	3,700	3,030	1,270	Hydraulic	2 wear soles	•	1,150

Type	Bracket	With max	With min	Heigh	Swivelling	Bottom plates	Float position	Weight
		mm	mm	mm				kg
VB 4000	L120	4,000	3,280	1,300	Hydraulic	2 wear soles	•	1,230
	3P L120 Kombi	4,000	3,280	1,300	Hydraulic	2 wear soles	•	1,230
	L150-	4,000	3,280	1,300	Hydraulic	2 wear soles	•	1,230
	3P	4,000	3,280	1,300	Hydraulic	2 wear soles	•	1,230

Accessories

Type	Elec. sys.	Note
Combination valve	12 V	*
Combination valve	24 V	*
Combination valve, inkl kabelsats	12 V	Handle
Combination valve, inkl kabelsats	24 V	Handle
Combination valve, inkl kabelsats	12 V	Pedal
Combination valve, inkl kabelsats	24 V	Pedal
Cabling for Folding plough		Handle
Cabling for Folding plough		Pedal
Lamps	12 V	Diodetyp
Lamps	24 V	Diodetyp
Lamp fitting, rubber	12 V	Wite/Red, incl diodelamps
Lamp fitting, rubber	24 V	Wite/Red, incl diodelamps
Glass		Wite
Glass		Red
Diode lamp	12 V	
Diode lamp	24 V	
Reflex bottle		
Snow stop*		
Snow mist guard		
Wear soles		
Wheel assembly		

* Not compatible with VB 3200

Diagonal ploughs

Type	Bracket	With max	With min	Heigh	Swivelling	Bottom plates	Float position	Weight
		mm	mm	mm				kg
DB 3200	L120	3,200	2,650	1,100	Hydraulic	2 wear soles	•	980
	3P L120 Kombi	3,200	2,650	1,100	Hydraulic	2 wear soles	•	980
	L150-	3,200	2,650	1,100	Hydraulic	2 wear soles	•	980
	3P	3,200	2,650	1,100	Hydraulic	2 wear soles	•	980

Type	Bracket	With max	With min	Heigh	Swivelling	Bottom plates	Float position	Weight
		mm	mm	mm				kg
DB 3700	L120	3,700	2,900	1,100	Hydraulic	2 wear soles	•	1,050
	3P L120 Kombi	3,700	2,900	1,100	Hydraulic	2 wear soles	•	1,050
	L150-	3,700	2,900	1,100	Hydraulic	2 wear soles	•	1,050
	3P	3 700	2 900	1 100	Hydraulic	2 wear soles	*	1,050

Type	Bracket	With max	With min	Heigh	Swivelling	Bottom plates	Float position	Weight
		mm	mm	mm				kg
DB 4000	L120	4,000	3,200	1,100	Hydraulic	2 wear soles	•	1,120
	3P L120 Kombi	4,000	3,200	1,100	Hydraulic	2 wear soles	•	1,120
	L150-	4,000	3,200	1,100	Hydraulic	2 wear soles	•	1,120
	3P	4 000	3 200	1 100	Hydraulic	2 wear soles	*	1,120

Accessories

Type
Snow stop
Snow mist guard
Double wear-resistant steel blades
Wheel assembly

Sweden plough

Type	With max	With min	Side displacement frame	Height with wear steel	Height with wear steel	Swivelling	Wear steel	Weight
	mm	mm	• / -	Right	Left	°	Number	kg
320	3,200	2,800	•	800	1,300	37	4	1,545
400	4,000	3,230	-	800	1,450	37	5	1,620

Ice ripper blade

Type	With max	With min	Height with wear steel	Swivelling	Wear steel	Weight
	mm	mm	mm	°	Number	kg
300	3,000	2,500	700	35	3	1,000
330	3,300	2,800	700	35	3	1,050
360	3,600	3,100	700	35	3	1,100

Grader blade

Type	With max	With min	Cutter extension, right	Cutter extension, left	Swiv. Right	Swiv. Left	Inclination reg.	Cutter angle reg	Total weight incl. hydraulic control
	mm	mm	mm	mm	°	°	°	°	kg
MS-T5	2,860	2,300	305	305	20	10	±13	90-135	600

Side wing for tractors and lighter wheel loaders

Type	Max width	Max lift height	Max ploughing width from wheel outer side	Min width when retracted from wheel outer side	Total weight
	mm	mm	mm	mm	kg
Plog SP10 3P	4,600	500	2,050	700	900

Front sweeper

Type	Implement hitch	Working width	Width max	Sweeper roller diameter	Heigh max	Water tank volume	Dirt container volume	Dirt container effective volume	Weight empty	Weight, full water tank – full dirt container	Hydraulic flow	Recomm. oil flow
		mm	mm	mm	mm	litre	litre	liter	kg	kg	l/min	l/min
T-250	L120	2,500	2,700	700	1,270	550	1,100	800	1,280	3,430	80–160	100

Container arm

Type	Hitch	Total length	Weight
		mm	kg
RA 1000	L120	1,000	240

Crane arms

Type	Bracket	Design	Total length	Min length	Max load	Weight	Extension	Lyfting hook
			mm	mm	kg	kg		
KR 350	L120	Mech	3,500	2,200	1,500–1,000	250	2 del	BKL 10
KR 350	Atlas 65	Mech	3,500	2,200	1,500–1,000	240	2 del	BKL 10
KR 350	Trima	Mech	3,500	2,200	1,500–1,000	235	2 del	BKL 10
KR 350	Euro	Mech	3,500	2,200	1,500–1,000	240	2 del	BKL 10
KR 350	L-20	Mech	3,500	2,200	1,500–1,000	240	2 del	BKL 10
KR 350	L-30	Mech	3,500	2,200	1,500–1,000	240	2 del	BKL 10
KR 350	Kramer 380-580	Mech	3,500	2,200	1,500–1,000	230	2 del	BKL 10
KR 350	Ahlman 85-100	Mech	3,500	2,200	1,500–1,000	240	2 del	BKL 10
KR 500	L120	Mech	4,950	2,350	2,800–1,300	390	3 del	BKL 13
KRH 350	L120	Hydr	3,500	2,200	1,500–1,000	280	2 del	BKL 10
KRH 350	Atlas 65	Hydr	3,500	2,200	1,500–1,000	260	2 del	BKL 10
KRH 350	Trima	Hydr	3,500	2,200	1,500–1,000	250	2 del	BKL 10
KRH 350	Euro	Hydr	3,500	2,200	1,500–1,000	250	2 del	BKL 10
KRH 350	L-20-25	Hydr	3,500	2,200	1,500–1,000	250	2 del	BKL 10
KRH 350	L-30	Hydr	3,500	2,200	1,500–1,000	250	2 del	BKL 10
KRH 500	L120	Hydr/Mech	4,950	2,350	2,800–1,300	420	3 del	BKL 13
KRHH 500	L120	Hydr	4,950	2,350	2,800–1,300	450	3 del	BKL 13
KRH 700	L120	Hydr/Mech	7,000	3,300	2,000–1,000	580	3 del	BKL 13

Pallet forks – Hydraulic

Pallet forks – Hydraulic

Type	Bracket	Width	Weight
		mm	kg
GHH 1200	L120	1,200	150
GHH 1500 *	Trima	1,500	110
GHH 1500 *	L-20-25	1,500	120
GHH 1500 *	L30	1,500	110
GHH 1500 *	Atlas 65	1,500	110
GHH 1500 *	Euro	1,500	110
GHH 1500	L120	1,500	165
GHH 2000	L120	2,000	210
GHH 2000	L150-180	2,000	330
GHH 2200	L120	2,200	230
GHH 2200	L-150-180	2,200	300
GHH 2500	L120	2,500	300
GHH 2500	L-150-180	2,500	370
GHH 2200	L-180 20T	2,200	500

* Max. load 4.7 t TP500 regardless of fork size

Pallet forks – Hydraulic with built-in cylinders

Type	Bracket	Width	Weight
		mm	kg
GHH 1500 INB	L120	1,500	165
GHH 2000 INB	L120	2,000	235

Additional equipment

Type
Side shift funktion hydr
Side shift funktion EI 12 V
Side shift funktion EI 24 V
Set of rollers

Extension forks

B x T x L	TP 600	Weight
		kg
100 x 40 x 2,000	2,5 T	100
125 x 50 x 2,500	4,0 T	120
150 x 60 x 2,500	7,0 T	120

Hydraulic forks for pallet forks

B x T x L	TP 500	Weight
		kg
100 x 40 x 1,200	2,9 T	50
125 x 45 x 1,200	4,7 T	92
125 x 50 x 1,200	5,7 T	107
125 x 50 x 1,500	5,7 T	122
150 x 50 x 1,200	6,9 T	118
150 x 50 x 1,600	6,9T	126
150 x 50 x 2,000	6,9 T	150
150 x 60 x 1,200	9,9 T	145
150 x 60 x 1,600	9,9 T	172
150 x 60 x 2,000	9,9 T	200

B x T x L	TP 600	Weight
		kg
200 x 80 x 1,600	19,4 T	350
200 x 80 x 2,000	19,4 T	375

Hydraulic forks for pallet forks – with built-in cylinders

B x T x L	TP 500	Weight
		kg
125 x 45 x 1,200	4,7 T	92
125 x 50 x 1,200	5,7 T	107
125 x 50 x 1,500	5,7 T	122
150 x 50 x 1,200	6,9 T	118
150 x 50 x 1,600	6,9T	126
150 x 50 x 2,000	6,9 T	150
150 x 60 x 1,200	9,9 T	145
150 x 60 x 1,600	9,9 T	172
150 x 60 x 2,000	9,9 T	200
150 x 60 x 2,000	9,9 T	200

Pallet forks – Mechanical

Pallet forks – Mechanical

Type	Bracket	Width	Weight
		mm	kg
GH 1500 *	Trima	1,500	80
GH 1500 *	L30	1,500	130
GH 1500 *	Atlas 65	1,500	130
GH 1200	L120	1,200	90
GH 1500	L120	1,500	145
GH 1500	Small L120	1,500	130
GH 1500	L150-	1,500	220
GH 2000	L120	2,000	190
GH 2000	L150-	2,000	240
GH 2200	L120	2,200	210
GH 2200	L150-	2,200	260
GH 2500	L120	2,500	230
GH 2500	L150-	2,500	290

* Max. load 4.7 t TP500 regardless of fork size

Mechanical forks

B x T x L	TP 500	Weight
		kg
100 x 40 x 1,200 FEM	2,9 T	50
125 x 45 x 1,200	4,7 T	92
125 x 50 x 1,200	5,7 T	107
125 x 50 x 1,500	5,7 T	122
150 x 50 x 1,200	6,9 T	118
150 x 50 x 1,600	6,9 T	126
150 x 50 x 2,000	6,9 T	150
150 x 60 x 1,200	9,9 T	145
150 x 60 x 1,600	9,9 T	172
150 x 60 x 2,000	9,9 T	200

Pallet forks – Mechanical incl. 2 pcs fork arms

Type	Bracket	Width	Fork	Weight	TP 500
		mm	mm	kg	
GH 1300	Trima	1,300	100 x 40 x 1,200	150	2,9 T
GH 1300	L20-25	1,300	100 x 40 x 1,200	150	2,9 T
GH 1300	L-30	1,300	100 x 40 x 1,200	150	2,9 T

Snow clearing buckets

Type	Bracket	Bucket width	Flap width	Total width	Heigh	Depth	Volume	Weight
		mm	mm	mm	mm	mm	m³	kg
KS 2000	Trima	2,000	710	3,500	1,000	1,040	2	500
KS 2600	Large L120	2,600	950	4,500	1,300	1,500	4	1,100
KS 2750	Large L120	2,750	950	4,650	1,300	1,500	4	1,200
KS 3000	Large L120	3,000	950	4,900	1,300	1,500	5	1,300
KS 3500	Large L120	3,500	1,200	5,900	1,500	2,000	9	2,000

Accessories

Type
1,200 mm flaps

Sand spreading buckets

Type	Bracket	Cutting with	Weight	Spreading with	Hydraulic motor	Motor oil max
		mm	kg	mm		l/min
SS 400	Trima	1,600	280	1,400	315 c/c	210
SS 400	L20-25	1,600	280	1,400	315 c/c	210
SS 400	Euro	1,600	280	1,400	315 c/c	210
SS 550	Trima	1,800	310	1,600	315 c/c	210
SS 550	L20-25	1,800	310	1,600	315 c/c	210
SS 1000	Trima	1,800	440	1,600	315 c/c	210
SS 1000	L20-25	1,800	440	1,600	315 c/c	210
SS 1000	L30	1,800	440	1,600	315 c/c	210
SS 1000	L120	1,800	500	1,600	315 c/c	210
SS 1000	Atlas 65	1,800	500	1,600	315 c/c	210
SS 1000	Kramer 380-580	1,800	500	1,600	315 c/c	210
SS 1000	Ahlman 85-100	1,800	500	1,600	315 c/c	210
SS 1200	L120	2,040	570	1,800	315 c/c	210
SS 1200	L35-45 TPZ	2,040	480	1,800	315 c/c	210
SS 1200	L30	2,040	480	1,800	315 c/c	210
SS 1200	Kramer 380-580	2,040	480	1,800	315 c/c	210
SS 1200	Trima	2,040	480	1,800	315 c/c	210
SS 1200	Atlas 65	2,040	480	1,800	315 c/c	210
SS 1200	Atlas 95	2,040	480	1,800	315 c/c	210
SS 1800	L120	2,450	690	2,100	500 c/c	210
SS 2400	L120	2,450	780	2,100	500 c/c	210
SS 3000	L120	2,450	950	2,100	500 c/c	210
SS 3000	L 150-	2,450	990	2,100	500 c/c	210

Back filling buckets

Type	Bracket	Width	Heigh	Length	Weight
		mm	mm	mm	kg
ÅF 1200 Tapered	L120	1,250/800	800/300	2,500	500
ÅF 1400 Straight	L120	1,250	800/300	2,500	500
ÅF 800 Tapered	L120	1,200/500	650/300	2,000	400
ÅF 800 Tapered	L-30	1,200/500	650/300	2,000	400
ÅF 800 Tapered	L-20-25	1,200/500	650/300	2,000	400
ÅF 800 Tapered	Trima	1,200/500	650/300	2,000	400
ÅF 800 Tapered	Atlas 65	1,200/500	650/300	2,000	400
ÅF 800 Tapered	Ahlman 85-100	1,200/500	650/300	2,000	400
ÅF 800 Tapered	Kramer 380-580	1,200/500	650/300	2,000	400
ÅF 800 Tapered	Euro	1,200/500	650/300	2,000	400
ÅF 600 Tapered	Trima	800/500	500/300	2,000	340
ÅF 600 Tapered	L20	800/500	500/300	2,000	340

Grading buckets

Type	Bracket	Width	Depth	Heigh	Weight	Cutting steel	Volume
		mm	mm	mm	kg	mm	m³
PS 150	Atlas 32	1,500	800	510	180	150 x 20	0,8
PS 150	Trima	1,500	800	510	180	150 x 20	0,8
PS 150	Euro	1,500	800	510	180	150 x 20	0,8
PS 185	Trima (SMS)	1,850	1,100	560	280	150 x 20	1,5
PS 185	Euro	1,850	1,100	560	280	150 x 20	1,5
PS 185	Atlas 65	1,850	1,100	560	280	150 x 20	1,5
PS 185	Atlas AR50	1,850	1,100	560	280	150 x 20	1,5
PS 185	Ahlman AS50	1,850	1,100	560	280	150 x 20	1,5
PS 185	Kramer 380-580	1,850	1,100	560	280	150 x 20	1,5
PS 185	L-20-25	1,850	1,100	560	280	150 x 20	1,5
PS 185	L-30	1,850	1,100	560	280	150 x 20	1,5
PS 185	JCB 2CX	1,850	1,100	560	280	150 x 20	1,5
PS 185	JCB 407-520	1,850	1,100	560	280	150 x 20	1,5
PS 185	L120	1,850	1,100	560	280	150 x 20	1,5
PS 202	Trima (SMS)	2,020	1,100	560	290	150 x 20	1,8
PS 202	Euro	2,020	1,100	560	290	150 x 20	1,8
PS 202	Atlas 65	2,020	1,100	560	290	150 x 20	1,8
PS 202	Ahlman 85-100	2,020	1,100	560	290	150 x 20	1,8
PS 202	Kramer 380-580	2,020	1,100	560	290	150 x 20	1,8
PS 202	L20-25	2,020	1,100	560	290	150 x 20	1,8
PS 202	L30	2,020	1,100	560	290	150 x 20	1,8
PS 202	L35-45 TPZ	2,020	1,100	560	290	150 x 20	1,8
PS 202	L120	2,020	1,100	560	290	150 x 20	1,8
PS 220	Trima (SMS)	2,200	1,100	560	360	150 x 20	1,8
PS 220	Atlas 65	2,200	1,100	560	360	150 x 20	1,8
PS 220	L20-25	2,200	1,100	560	360	150 x 20	1,8
PS 220	L30	2,200	1,100	560	360	150 x 20	1,8
PS 220	L120	2,200	1,200	680	500	200 x 25	2,5
PS 220	L35-45 TPZ	2,200	1,200	680	500	200 x 25	2,5
PS 220	L30	2,200	1,200	680	500	200 x 25	2,5
PS 220	Trima (SMS)	2,200	1,200	680	500	200 x 25	2,5
PS 220	Atlas 65	2,200	1,200	680	500	200 x 25	2,5
PS 220	Kramer 680-1150	2,200	1,200	680	500	200 x 25	2,5
PS 220	Ahlman 85-100	2,200	1,200	680	500	200 x 25	2,5
PS 220	WB 70	2,200	1,200	680	500	200 x 25	2,5
PS 235	L120	2,350	1,200	680	630	200 x 25	2,8
PS 235	Trima (SMS)	2,350	1,200	680	630	200 x 25	2,8
PS 235	Euro	2,350	1,200	680	630	200 x 25	2,8
PS 235	Atlas 65-85	2,350	1,200	680	630	200 x 25	2,8
PS 235	WA95	2,350	1,200	680	630	200 x 25	2,8
PS 250	L120	2,500	1,500	680	885	270 x 30	3,0
PS 250	Atlas 95	2,500	1,500	680	885	270 x 30	3,0
PS 260	L120	2,600	1,400	680	750	200 x 25	3,2
PS 270	L120	2,700	1,400	680	780	200 x 25	3,5
PS 290	L120	2,900	1,500	680	1 100	270 x 30	4,0

Light material buckets

Type	Bracket	Volume	Width	Depth	Heigh	Weight	Cutting steel
		litre	mm	mm	mm	kg	mm
LM 1800 L	Trima (SMS)	1,800	2,100	1,050	1,000	340	200 x 20
LM 1800 L	Atlas 65	1,800	2,100	1,050	1,000	345	200 x 20
LM 1800 L	Kramer 380-580	1,800	2,100	1,050	1,000	350	200 x 20
LM 1800 L	L20-25	1,800	2,100	1,050	1,000	345	200 x 20
LM 1800 L	L30	1,800	2,100	1,050	1,000	340	200 x 20
LM 2000 L	L120	2,000	2,300	1,000	1,100	480	200 x 20
LM 2000 L	Trima	2,000	2,300	1,000	1,100	460	200 x 20
LM 2000 L	Atlas 85	2,000	2,300	1,000	1,100	465	200 x 20
LM 2000 L	L30	2,000	2,300	1,000	1,100	465	200 x 20
LM 3000 L	L120	3,000	2,600	1,350	1,150	700	200 x 25
LM 3000 L	Atlas 95	3,000	2,600	1,350	1,150	700	200 x 25
LM 3000 L	L35-45 TPZ	3,000	2,600	1,350	1,150	700	200 x 25
LM 4000 L	L120	4,000	2,750	1,550	1,300	1,030	200 x 25
LM 5000 L	L120	5,000	3,000	1,650	1,600	1,280	200 x 30

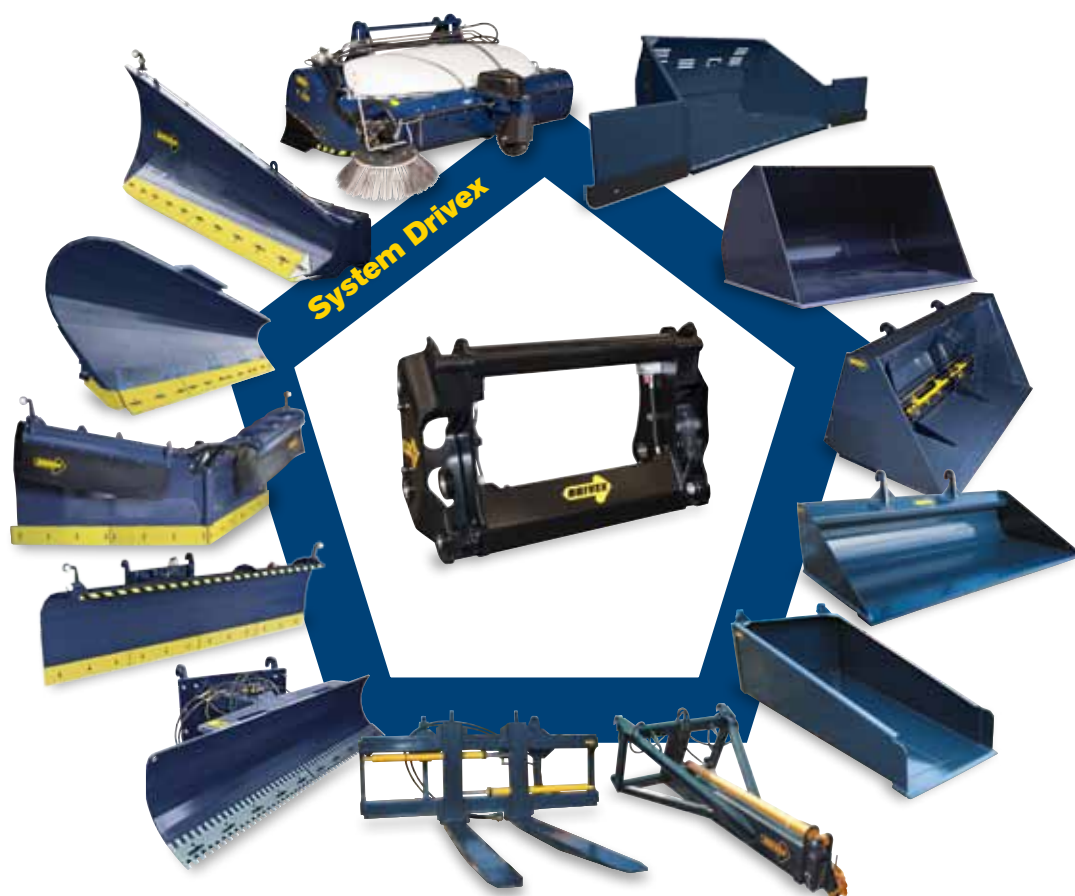
Gravel buckets

Type	Bracket	Volume	Cutting width	Depth	Heigh	Weight
		SAE	mm	mm	mm	kg
GS 1500 L	L120	1,500	2,430	950	1,000	710
GS 2000 L	L120	2,000	2,600	1,120	1,100	800
GS 2800 L	L120	2,800	2,750	1,300	1,260	1,100

Snow loader – Mählers

Snow loader		LSV 275
Working width	mm	2,750
Vertical clearance under load arm	mm	3,850
Rotor diameter:	mm	800
Capacity (depending on snow)	m³/min	25–45
Electrical system	V	24
Total weight	kg	3,100
Engine*	Mercedes OM 924 LA	
Power output at 2,200 rpm	kW	115

* Meets latest environmental requirements in EU Stage 3B, so it's approved for use after 2012.



Switch between jobs in 10 seconds

Do you want to simplify your work and switch to a different job in a matter of seconds? Then look out for our hydraulic implement hitch, which was launched in 2010. System Drivex is a complete range of buckets, ploughs and tools for material handling that opens up new business opportunities for your wheel loader or backhoe loader all year round. Our new pick-up front sweeper is a good example. With a large volume and a simple emptying system, it raises your capacity and profitability season after season, along with the other tools in System Drivex.



engcon®



TOOL SYSTEM FOR INCREASED PROFITABILITY

engcon Uk Ltd, Unit 4, Reaymer Close, Bloxwich, Walsall, West Midlands, WS2 7QZ
 Phone +44 (0) 1922 408 419 | Fax +44 (0) 1922 710 382 | E-mail uk@engcon.com